

Fees and Costs – Dover Residential Aged Care

1. Basic Daily Fee – based on current rates, the maximum basic daily fee is \$56.87 per day, or \$ 20,757.55 per year. (Current at 1st October 2022)

This fee helps pay for your day-to-day services such as meals, cleaning, facilities management, and laundry. Everyone is expected to pay a basic daily fee to cover these services.

The basic daily fee is 85% of the single person rate of the basic age pension. The government sets the price on 20 March and 20 September each year, changing in line with increases to the age pension. Prices are published on the Department of Health website.

You pay your basic daily fee directly to your aged care home, generally on a fortnightly or monthly basis. The fee applies for every day you are a resident, including days when you might be away overnight, for example, on holiday or in hospital.

2. Means-tested Care Fee – advised by Centrelink/ Department of Health

This is an additional contribution towards the cost of care that some people may be required to pay. The Department of Health will work out if you are required to pay this fee, based on an assessment of your income and assets, and will advise you of the amount.

Residents with very low assets and income are not required to pay this fee.

3. Accommodation Payment

The accommodation payment is the cost of the room. It will be the agreed price detailed in a Pre-Admission Agreement that will be completed and signed before entry into care. You may pay the accommodation payment as a Refundable Accommodation Deposit (RAD), Daily Accommodation Payments (DAP), or a combination.

Residents with very low assets and income may be determined by the government to have no Accommodation Payment required.

- Standard C Room - \$345,000 (RAD) or \$59.64 per day* (DAP) OR a combination
- Standard B Room - \$368,000 (RAD) or \$63.62 per day* (DAP) OR a combination
- Standard A Room - \$402,500 (RAD) or \$69.58 per day* (DAP) OR a combination

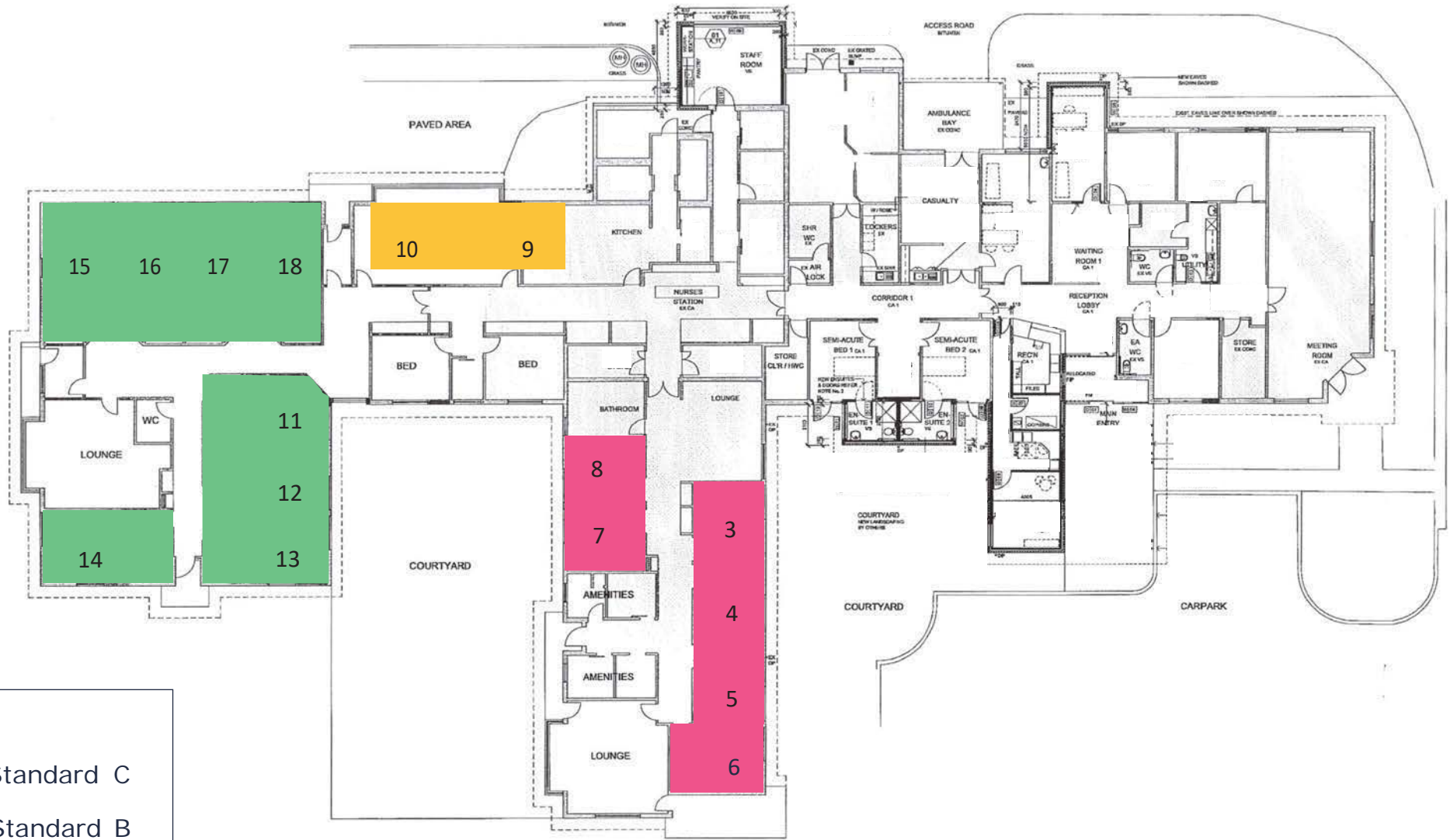
For your information, a Dover facility map with colour-coded room types is attached below.

You can use the [Residential Care Fee Estimator](#) on the My Aged Care website to help you estimate what costs you may be asked to pay.

For more information, please visit the [Aged care home costs and fees](#) on the My Aged Care website.

**these rates may change at short notice due to changes in interest rates.*

Dover Residential Aged Care-Accommodation Room Types



Key

- Standard C
- Standard B
- Standard A

