

Fees and Costs - Nubeena

Residential Aged Care

1. Basic Daily Fee (BDF)

Every resident pays the basic daily fee for hotel services they receive such as meals, cleaning, laundry, and heating. The government sets the BDF twice yearly on March 20 and September 20.

The BDF is indexed to 85% of the single person basic aged pension and is currently \$60.86.

We do not deduct this fee from your aged pension. You will be invoiced monthly. The fee applies for every day you are a resident, including days when you might be away overnight e.g. on holiday or in hospital.

2. Accommodation Payment

This is the cost of your room based on a means assessment. Payment options consist of paying a lump sum deposit called a RAD, or paying as daily payments called a DAP, or combining the two.

RAD deposits are fully refundable upon discharge, whereas DAP payments are not refundable.

Depending on your means assessment by Services Australia/DVA, you may be fully supported and pay no accommodation payment, you may be partially supported where you pay the difference, or you may not be supported and required to pay the full fees.

3. Means Tested Care Fee (MTCF)

Some people are required to pay an extra ongoing fee towards the cost of their personal and clinical care. This is advised from your means assessment with Services Australia and this fee can change over time.

4. Other Fees

Additional and extra service fees apply for additional items or bundles you agree to.

The My Aged Care website provides a [fee estimator](#) to assist you estimate your costs for aged care.

The Dept of Health and Aged Care website publishes a [schedule of Fees and Charges](#) for residential aged care.

	Standard B Room	Standard A Room	Superior Room	Premium Room
Accommodation Payment RAD ¹ (lump sum) Or DAP ² (daily)	\$312,500 Or \$71.75	\$343,750 Or \$78.92	\$375,000 Or \$86.10	\$500,000 Or \$114.79
Basic Daily Fee²	\$60.86	\$60.86	\$60.86	\$60.86
Means Tested Care Fee³	As per Services Australia Assessment			

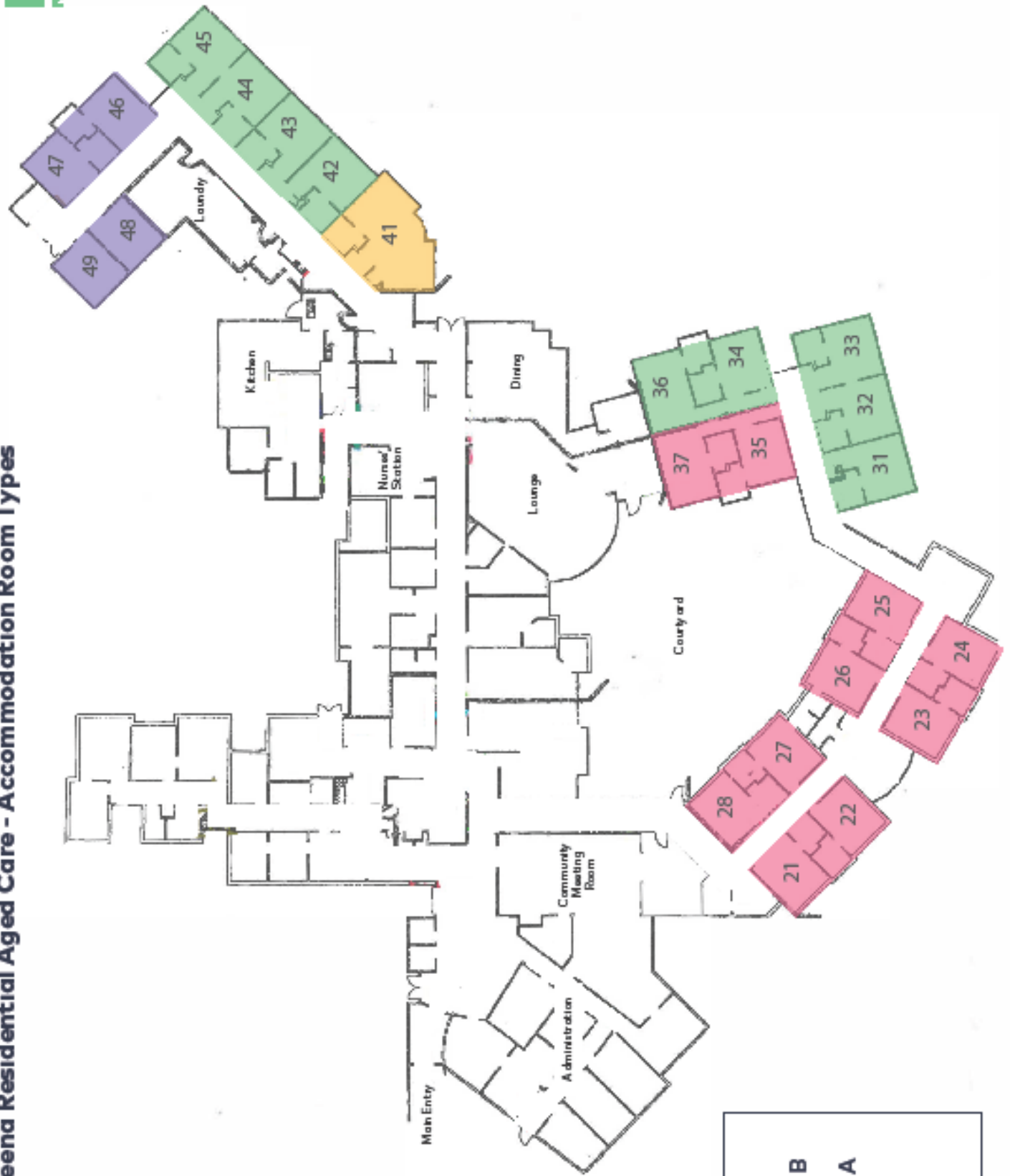
¹ Rates may change at notice.

² Indexation and interest rates may change at notice. For details, visit:

<https://www.health.gov.au/resources/publications/schedule-of-fees-and-charges-for-residential-and-home-care>

³ As assessed by Services Australia/DVA and where applicable.

Nubeena Residential Aged Care - Accommodation Room Types



Key	
	Standard B
	Standard A
	Superior
	Premium